

4807 S Highway A1a #102



\$435,000

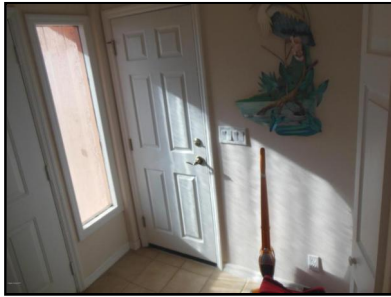
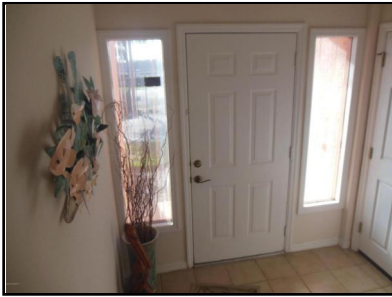
3 Beds, 0.5 Baths, 1700 Sq Ft

4807 S Highway A1a #102

Melbourne Beach, FL 32951

MLS # 774027

Built in 1985



WATCH the DOLPHINS Play!!! LISTEN to the WAVES gently lap the SHORE!!! VIEW the BIRDS swish through the AIR from this Direct OCEANFRONT Unit!!! Lots of Privacy, near Publix, and only six units in the building. High Impact Glass, Light dimmers, and all new from the girders out--completely rebuilt for an essential age of 2005.

Joette Davis
Berkshire Hathaway HomeServices Florida
Realty
JoetteinFL@gmail.com



Powered by Paradym

Take an online tour at view.paradym.com/3952200

Information supplied by sellers. Deemed reliable, but not guaranteed.

