

111 STONE HILL DRIVE

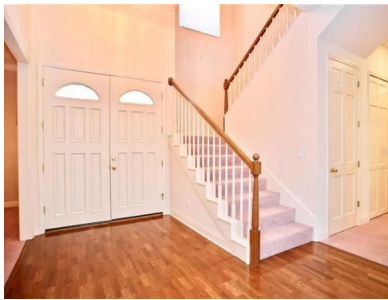


\$539,000

5 Beds, 4.5 Baths, 3317 Sq Ft

**111 STONE HILL DRIVE
MAITLAND, FL 32751**

**MLS# O5819720
Built in 1994**



Seldom do you find an original 25-year-old home still in impeccable condition like this one! Pride of ownership shows in every room and you know the home was well cared for. Formal living room and dining room adjacent to the open kitchen and family room provides plenty of space for entertaining. Ample kitchen cabinets, walk in pantry and additional storage in the spacious laundry room. Custom built with 3 bedrooms downstairs, each with their own private full bath (one being the master). 2 bedrooms and a full bath upstairs. French doors lead from both the living and family room to the Florida room with lots of windows and natural light allowing this flex bonus space to be utilized to meet your needs. Step out back to your very own park li...



Shirley Welch
Berkshire Hathaway HomeServices Florida Realty
shirleyswelch@gmail.com
<http://shirleyswelch.com/>

**BERKSHIRE
HATHAWAY**
HOMESERVICES
FLORIDA REALTY

View a VisualTour at tours.bhhsfloridarealty.com/4416528
Powered by Paradym

Information supplied by sellers. Deemed reliable, but not guaranteed.

