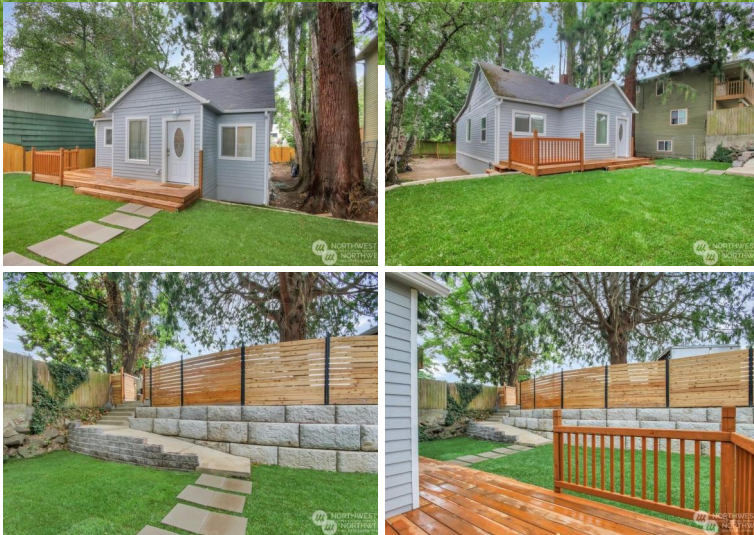




4636 S Othello St
Seattle, WA 98118
\$599,000



Huge Price Drop! Adorable Brighton Beach 3 bedroom, 2 bath home within walking distance of Othello Train station, close proximity to Downtown Seattle & Sea tac airport, making it an ideal location. Owner is currently renting it on air bnb, making 4-6k/mo-'-- making it a fantastic investment piece as an air bnb, or full term rental. NO HOA! All new inside, just waiting for that lucky buyer. Nestled on a nice sized, freshly planted & manicured front lawn w/new front & back decks & a massive new retaining wall & staircase. The backyard is waiting for your personal touches to make it your own. Moderate density zoning in a prime location in an up & coming area of businesses & upscale homes, buy it & reap the future equity rewards.



Lori Vandelac
Gateway Real Estate
(253) 904-1500
(253) 318-4412 Cell
lori@lorivandelac.com
<https://www.gatewayre.com/lori-vandelac>

GATEWAY
REAL ESTATE

View a VisualTour at view.paradym.com/4910436
Powered by Paradym

Information supplied by sellers. Deemed reliable, but not guaranteed.
Last Checked: 5/11/2025 3:23 AM (EST)
Last Updated: 5/6/2025 3:54 AM (EST)

